



GAT MONTHLY MEMBERSHIP PROGRESS REPORT

Results as of: 3/31/2023

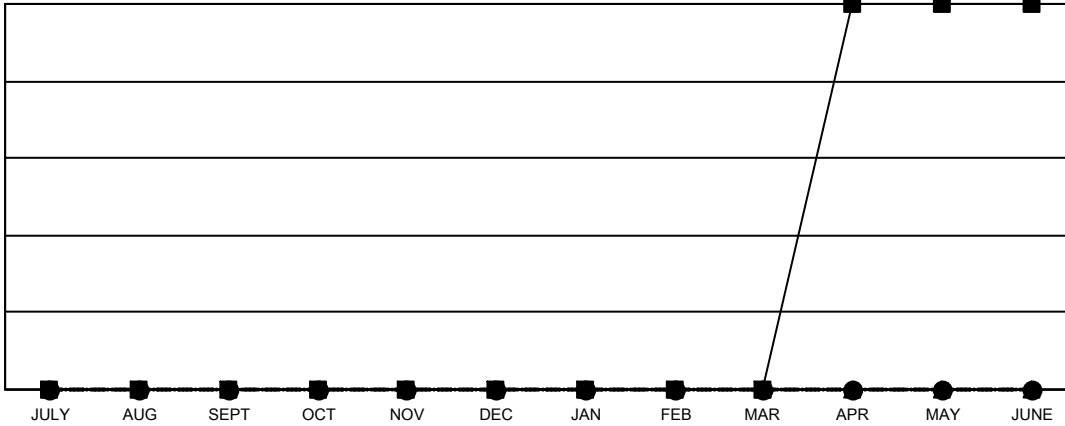
Multiple District 28

LOCATION: UTAH

Clubs			
RESULTS FOR 2022-2023			
QUARTER	NEW CLUB GOAL	NEW CLUBS	DROPPED CLUBS
JULY/AUG/SEPT	0	0	0
OCT/NOV/DEC	0	0	1
JAN/FEB/MAR	0	0	0
APR/MAY/JUNE	1	0	0

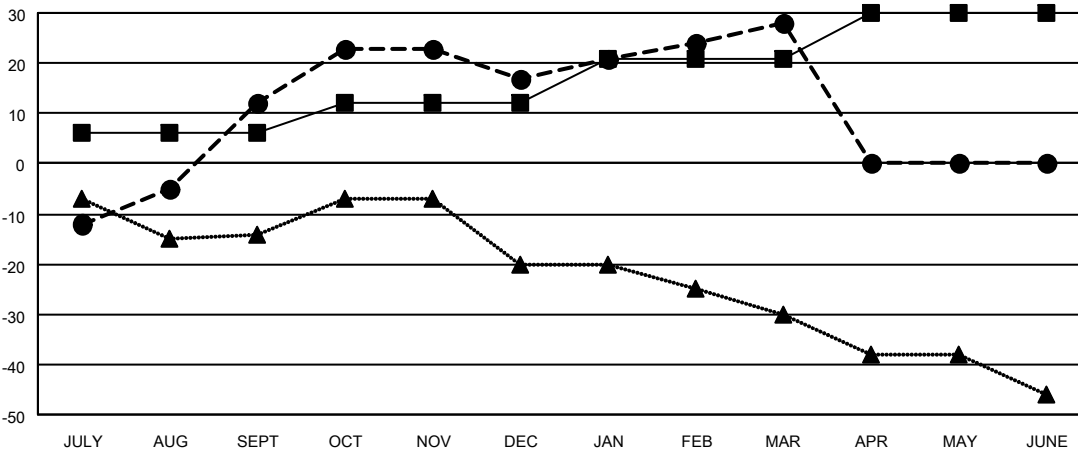
Members			
RESULTS FOR 2022-2023			
QUARTER	MEMBER GROWTH NET GOAL	MEMBER GROWTH ACTUAL	DROPPED MEMBERS ACTUAL (including transfers)
JULY/AUG/SEPT	6	49	37
OCT/NOV/DEC	6	30	23
JAN/FEB/MAR	9	32	15
APR/MAY/JUNE	9	0	0

GOALS AND ACTUAL NEW CLUBS CUMULATIVE



- CURRENT YEAR GOALS FOR NEW CLUBS
- CURRENT YEAR ACTUAL NEW CLUBS
- ▲- LAST YEAR ACTUAL NEW CLUBS

GOALS AND ACTUAL MEMBERS CUMULATIVE



- MEMBER GROWTH NET GOAL
- MEMBER GROWTH ACTUAL
- ▲- LAST YEAR MEMBERSHIP ACTUAL

DROPPED CLUBS: 1	29 CLUBS OF 52 ADDED 1 OR MORE NEW MEMBERS	<u>GENDER DISTRIBUTION</u>	
<u>DROPPED MEMBERS</u>		MALE	667 (69.77%)
DECEASED	CLICK HERE FOR CUMULATIVE MEMBERSHIP DATA	FEMALE	289 (30.23%)
CLUB CANCELLED		NON BINARY	0 (0.00%)
OTHER		PREFER NOT TO ANSWER	0 (0.00%)
TOTAL		75	TOTAL FAMILY UNIT MEMBERS
		FAMILY MEMBERS PAYING HALF DUES	127